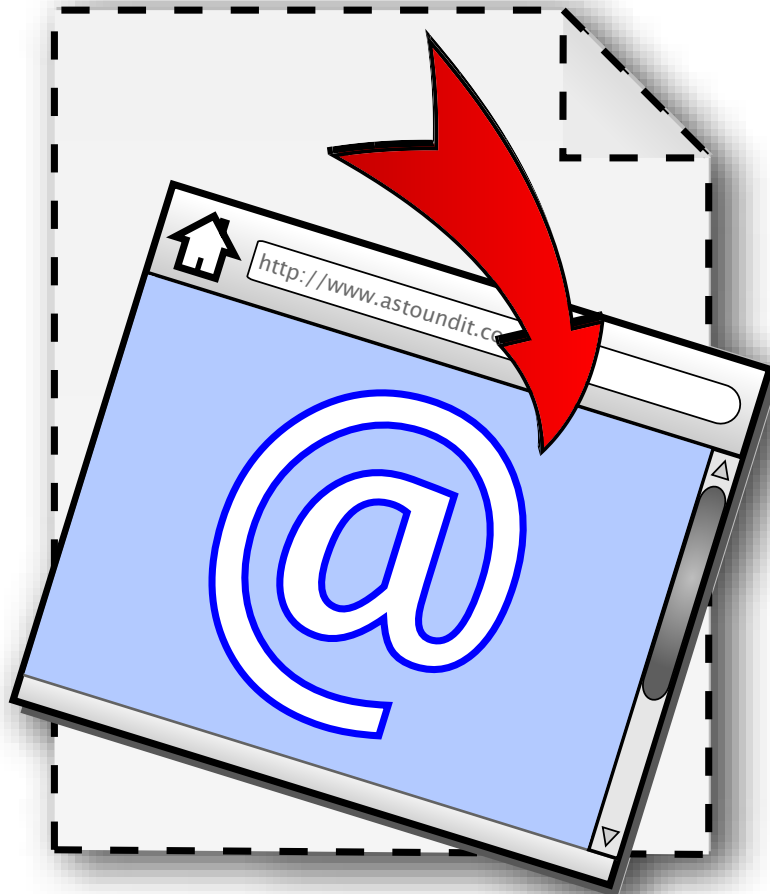


EASY QUICKSTART GUIDE

# Webseecon™

FOR MACINTOSH



View your Internet shortcuts  
as they were meant to be seen.

**astoundit**®

# Welcome : Start Using Webseecon

## Welcome to Webseecon! (*Pronounced: Web-See-Con*)

This revolutionary software will change the way you use your Macintosh, and allow you to easily, and visually navigate through the many Internet Location Files (Explained below) on your computer.

### What's It Do?

As a Macintosh user, you already have the ability to easily save your favorite websites as special bookmark files on your computer for quick and easy access. Mac OS X allows you to simply drag a website's URL from your web browser onto your computer, and it automatically creates a special file (We'll refer to it as an "Internet Location Document" from now on) that will open a specific webpage when it's opened. Although this is a very cool feature, there's one problem...they all look exactly the same when viewing them on your computer desktop. This makes it hard to easily identify them, especially if you have more than a few.

Webseecon solves this problem by automatically creating custom, beautiful icons for each of these Internet Location Documents. Check out the before/after pictures below...



As you can see, the icon on the right (Which has been processed by Webseecon) is **much** easier to quickly recognize - plus it just looks cool!

### Visually Appealing...Helpful Too!

Of course your new icons will not only look great...but you'll be surprised to find how much more productive you can be with the ability to quickly view your Internet Location Files - without the need to open them, wait for your web browser to load, and go through each one. Webseecon allows you to enhance and utilize the full capability of full-color icons available in Mac OS X - providing a very powerful, useful tool for any user.

### Made For Mac OS X

Webseecon was created exclusively for Macintosh OS X users. We were able to take advantage of the wonderful built-in support for huge, beautiful icons at 128x128 pixels; allowing for impressive and realistic recreations of any website. Each icon is also given a perfect transparency mask, rounded corners, and an "Aqua" drop shadow for perfect desktop integration.

# First Start : Try It or Buy It

The first time you start Webseecon, you'll have the choice to either start the free trial, or register (If you've already purchased it). Before buying Webseecon, feel free to try it - you can start this software 10 times before you will need to register to continue using it.

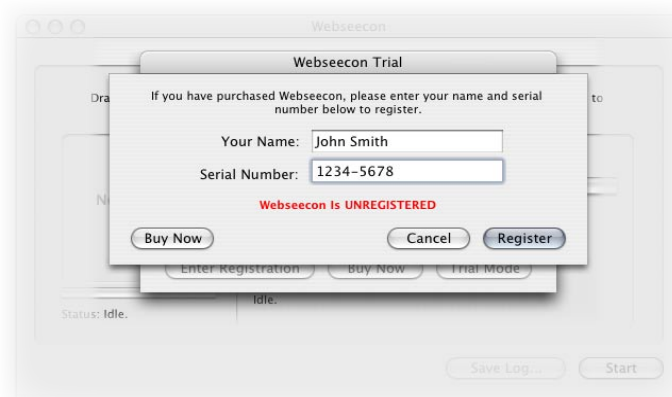


*Trial Start Screen*

## How To Register

If you have not yet purchased Webseecon, click on the “**Buy Now**” button to visit our secure online store. You'll then receive your own personal serial number within minutes - there's no wait!

Once you've received your registration information, just click on the “**Enter Registration**” button. Then, type in your name and the unique serial number that was sent to you upon purchase. Click the “**Register**” button, and Webseecon will be unlocked into the full version - it's very fast and simple!



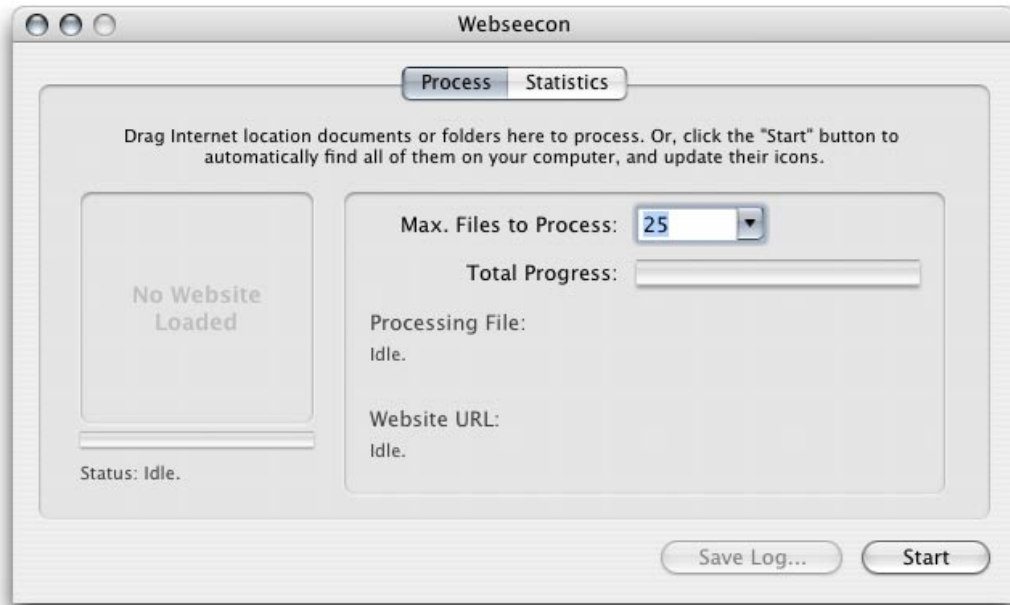
*Enter Your Registration Information*

# Using Webseecon : Let The Fun Begin!

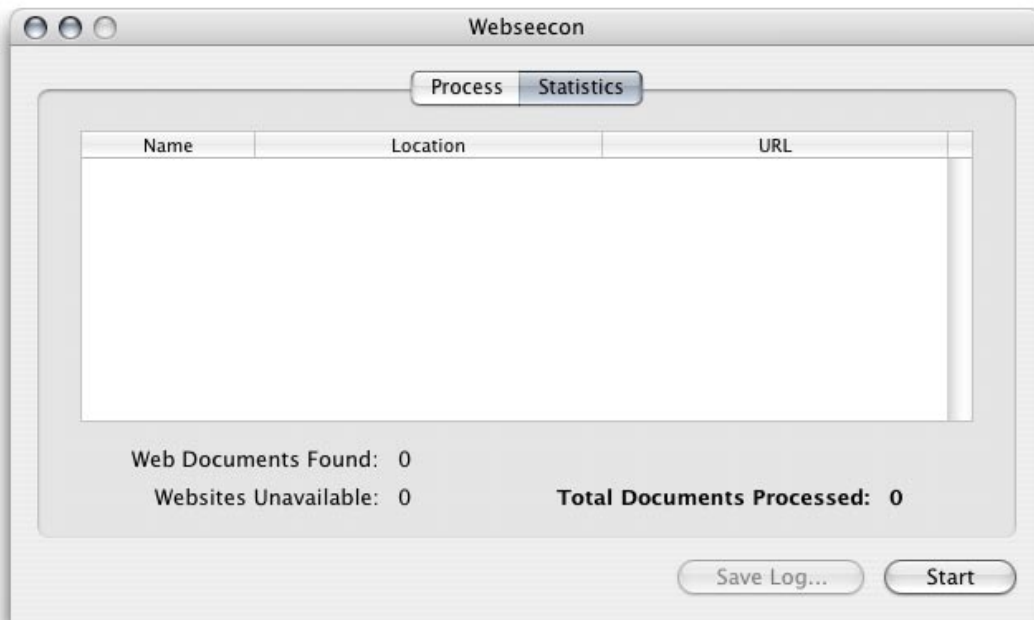
## The Right Tool For The Perfect Job!

Webseecon offers 3 ways of processing your Internet Location Documents...

**Full Scan:** To have Webseecon automatically search your computer for all of your Internet Location Documents, click on the **“Start”** button. Webseecon will then seek out, and set each of these document’s icons to a crystal-clear miniaturized version of its related website. You can easily track the progress of Webseecon, and see which documents it finds by clicking on the **“Statistics”** tab. You can also set the maximum number of documents you want Webseecon to search for by either choosing one of the presets, or typing in a number.



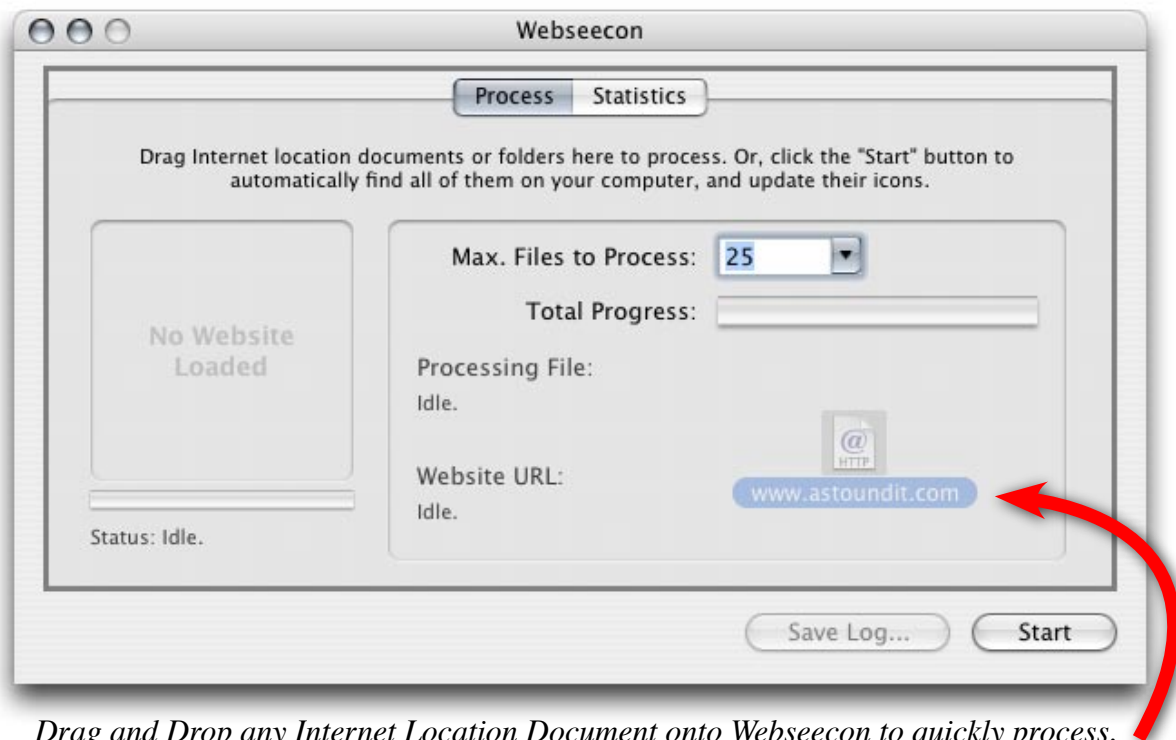
*Webseecon’s Main Screen*



*Current Statistics*

**Single Documents:** If you have a single specific Internet Location Document that you want to have Webseecon process, just drag and drop the document onto the Webseecon window. When dragging the document, you'll notice a dark border appear when you move the document over the Webseecon program - that's when you can release the mouse-button. That document will then be immediately processed, and its icon will show the related website within seconds.

**Folders:** If you would like to process many Internet Location Documents at once, but not *all* of them on your computer (In which a Full Scan would be your best option); just drag and drop any folder onto Webseecon. Since Webseecon is very smart, it will automatically find all of your documents in the main folder you just dropped on top of it, but also inside any other folder(s) you have within that folder - making it very easy to process a specific set of documents very quickly.



*Drag and Drop any Internet Location Document onto Webseecon to quickly process.  
(Folders too!)*

### **Made For Speed**

While Webseecon is very efficient at what it does, its speed is still somewhat dependent on your Internet connection speed. Since Webseecon must fetch the information for each website before processing, the faster your Internet connection is, the faster it can work.

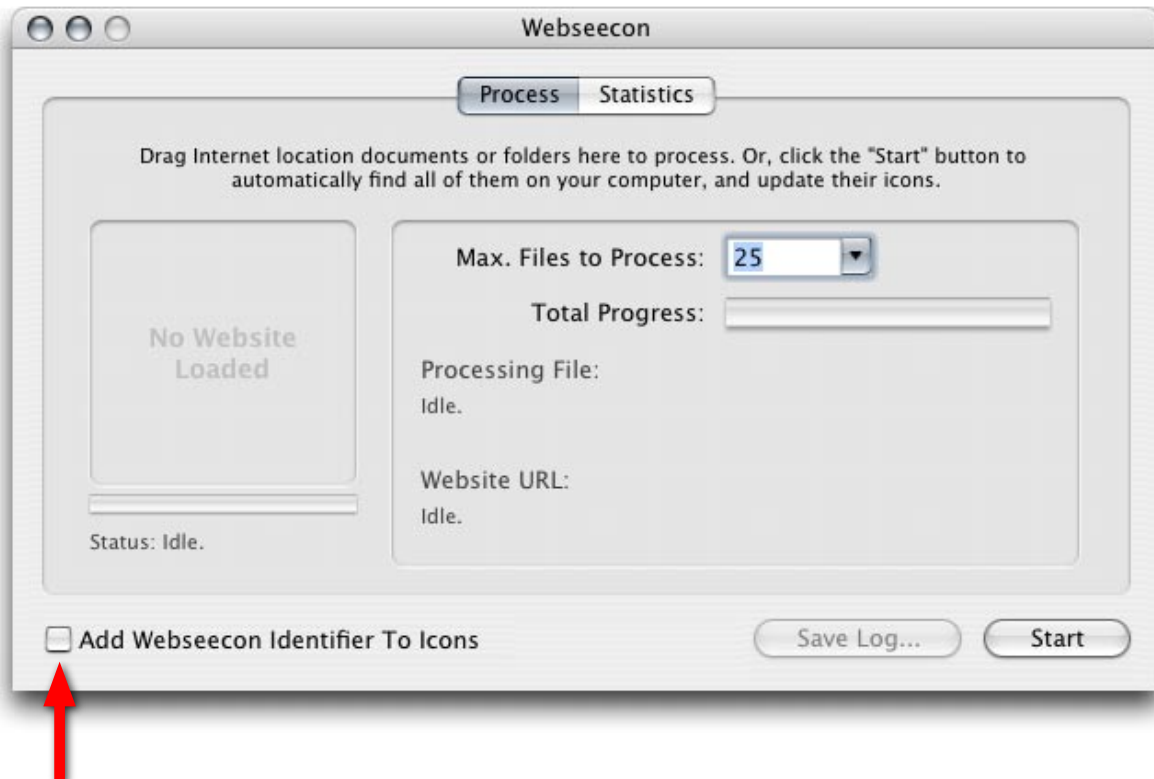
### **Logging**

After Webseecon processes any document(s), you can easily save a text-based log of the changes made. Just click on the “**Save Log...**” button, and choose a location to save it in. Most users won't need to use this feature, but it's there if you need it.

# Additions : New In Version 1.5

Webseecon 1.5 adds many additional enhancements over the initial 1.0 release. This includes visually-appealing refinements such as rounded-corners, masked backgrounds, and Mac OS X “Aqua” shadows to blend in perfectly with your desktop. There’s also an option to include a small graphic on the lower-left portion of each icon that allows you to easily identify it as an Internet shortcut.

Additional improvements have also been made to vastly speed up every aspect of Webseecon. The overall interface is mostly unchanged from the original release, with the addition of the “Add Webseecon Identifier To Icons” option. Here’s a quick look at the new interface introduced in Webseecon 1.5...



*New option added to display a small graphic on each icon for easy, quick identification.*

# Tech Stuff : Nitty-Gritty Information

Webseecon uses advanced programming techniques to accomplish its task. Your Internet Location Documents will never look better! Webseecon can even process websites that use “plug-ins” such as Flash, Shockwave, and even QuickTime movies! When Webseecon fetches the requested website, it will automatically parse all of these special page elements together to create a crisp, clean-looking 128x128 pixel, native Mac OS X icon that exactly resembles the related website.

Internet Location Files (as we call them) are special documents on your computer that are usually created when you drag a website’s URL (or address) from your web browser to your computer (Such as your Desktop). The document that’s created can then be clicked on anytime to quickly visit that website. As a technical note, Webseecon searches for only these specific documents (which usually have a “.webloc” extension), and won’t alter anything else - your other documents will not be touched.

## New In Version 1.5

With Webseecon 1.5, the hard drive search and website “grab” features have been separated into multiple threads to increase the overall performance by at least 30% on most computers, while at the same time reducing overall CPU usage. Webseecon will now also process files with long filenames correctly, and Internet shortcuts with incorrect “File Types”. Drag/drop support has been expanded to support multiple files (Drag/drop as many Internet shortcut files as needed), and nested folders (Folders within folders). All of these performance enhancements are sure to provide you with a faster, much more stable experience all-around.



*In the “Webseecon” menu, choose “About Webseecon...” to view program and version information.*

# APPENDIX : About Astoundit Software

## How To Contact Astoundit Software

Please use the following information to contact us. To keep our retail product prices as low as possible, we do not provide phone support; for fastest service please contact us via our online technical support “ticket system” (fastest and preferred method), or by e-mail. We can usually respond to you within 24 - 48 hours during normal business hours. Our website also offers technical support for many of your most common questions.

Business Hours: Monday - Friday  
9:00am - 5:00pm PST

Website: [www.astoundit.com](http://www.astoundit.com)

Technical Support Website: [www.astoundit.com/support](http://www.astoundit.com/support)

E-Mail: [support@astoundit.com](mailto:support@astoundit.com)

Mailing Address: Astoundit Software  
2060-E Avenida de los Arboles, #D 362  
Thousand Oaks, CA 91362

## Technical Support Questions

*I have a question or problem with my software, how do I get help?*

The easiest way to get immediate help with the most common issues is to visit our support website, which can provide you with immediate answers 24 hours a day, 7 days a week ([www.astoundit.com/support](http://www.astoundit.com/support)). We've also provided a list of Frequently Asked Questions (FAQ) to help you with the most common problems. If you have an issue that is not answered on our website, please contact our support team by using our fast and easy “[ticket](#)” system that will assign your question a unique “ticket” number. This will allow us to respond as quickly as possible - this is the preferred method of technical support communication.

Ongoing direct technical support is only available to registered users. For fastest responses, please give us as much detail about your problem that you can, including your operating system version if possible (Example: Mac OS X 10.3). The more details you can provide about your issue, the quicker and easier we will be able to help you find a solution.

**Thanks for supporting Webseecon, we hope you enjoy seeing your icons the way they were meant to be seen.**

*- Astoundit Software's Development Team*



## Easy Quickstart Guide and Documentation Webseecon

### Astoundit Software

2060-E Avenida de los Arboles, #D 362  
Thousand Oaks, CA 91362

Find us on the World Wide Web at: <http://www.astoundit.com>  
To report errors, please send a note to [info@astoundit.com](mailto:info@astoundit.com)

Copyright © 2004 by Astoundit Software  
Last Updated: July 26, 2004.

### Notice of Rights

All rights reserved. No part of this book may be reproduced or transmitted in any form by any means, electronic, mechanical, photocopying, recording, or otherwise, without the prior written permission of the Astoundit Software. For information on getting permission for reprints and excerpts, contact [info@astoundit.com](mailto:info@astoundit.com).

### Notice of Liability

The information in this documentation is distributed on an “As Is” basis, without warranty. While every precaution has been taken in the preparation of this documentation, instructions, and examples, Astoundit Software shall not have any liability to any person or entity with respect to any loss or damage caused or alleged to be caused directly or indirectly by the instructions contained in this book or by the computer software and hardware products described in it, or by the actual software product(s) themselves.

### Copyrights and Trademarks

This documentation is a copyright of Astoundit Software. By using Webseecon, you agree to abide by the terms of the included License Agreement. You can always obtain our License Agreement by contacting us at [info@astoundit.com](mailto:info@astoundit.com).

The logo for Astoundit Software, featuring the word "astoundit" in a bold, blue, sans-serif font. The letters "a", "s", "t", "o", "u", "n", "d", and "i" are solid blue, while the letters "t" and "i" at the end are white with a blue outline. A registered trademark symbol (®) is located to the right of the final "t".